

## **Wunder Lift user guide**

Lift will come fully assembled in the folded position. Set up instructions are below:

### **To unfold:**

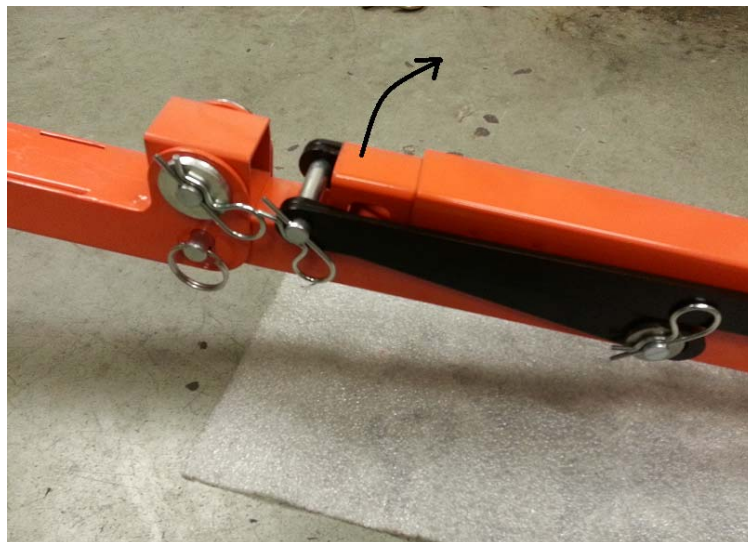
1. Pull quick release pin from bracket shown below.



2. Unfold top handle and insert the quick release pin through the bracket and tube to lock the handle in place as show below. Make sure pin is fully inserted before using the lift.



3. Once the handle is open, unfold the lifting arm. You will experience some slight resistance when unfolding. This is to help ensure the lift arm does not collapse on your fingers when the lift is folded back up.



4. The Wunder Lift is ready to use once the lift arm is fully extended out.



5. To fold the lift back up just repeat the above process in reverse order.

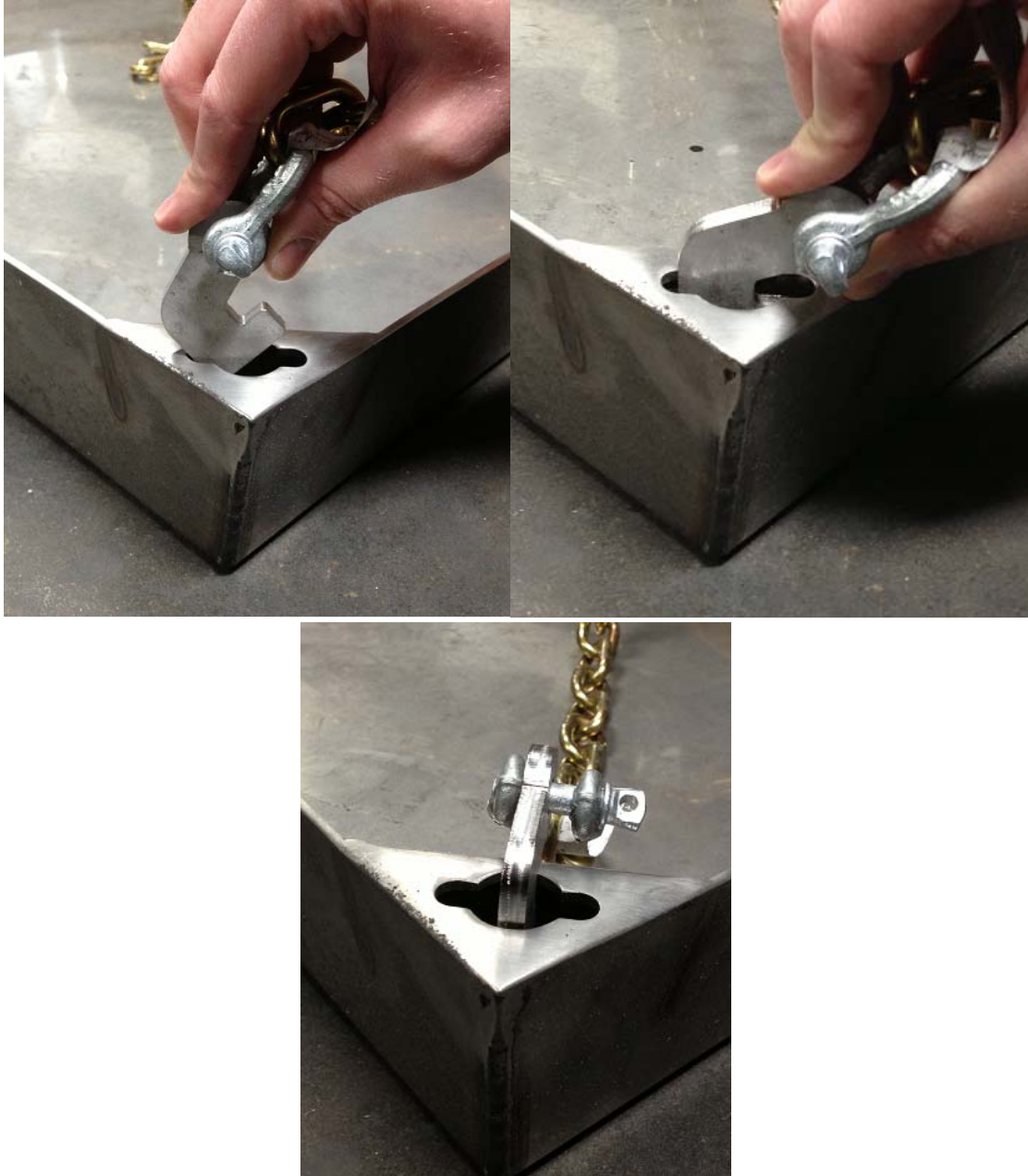


### Lifting a cover using Wunder Lift with Chain Kit

A chain kit is required to lift WunderCovers with the Wunder Lift. The Chain Kit comes equipped with 4 chains with specially designed lift hooks and a chain box.

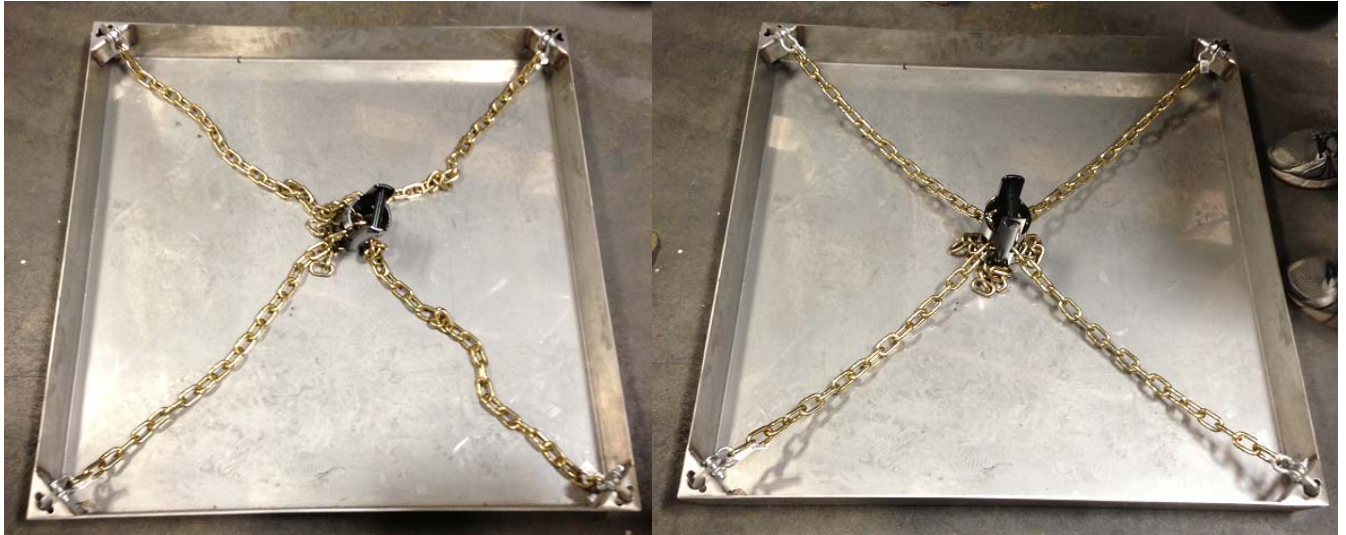
#### Attaching the chain to the cover:

1. The first step in attaching the chain kit to the Cover is to place the hooks in the lifting holes. To do this slightly angle the hooks and slide them into the lifting holes. Once the hooks are placed in the holes, rotate them 90 degrees so that the chain is facing inward toward the center of the Cover.





2. Once the hooks are in place feed the chain through the lift box until the chain is pulled tight in all four directions.



3. Once the chains are in place take the lift and place it through the lift box as shown below.



4. You are now ready to lift the tray.

